



1. Ramp – 2. House – 3. Open Front Table – 4A. Brush Gate – 4B. Brush Slab – 5. Black Table – 6A. Roll – 6 B. Roll
7. Feeder into Water – 8. Red Corner – 9. Rock Table – 10. Cabin – 11. Trak – 12A. Man-Log – 12B. Soggy Log
13. Man-Log – 14. Hilltop Log – 15. Man-Log – 16. Log – 17A. Trak – 17B. Chevron Ramp – 18. Rolltop

Distance: 2310 Meters Speed: 450 m.p.m.

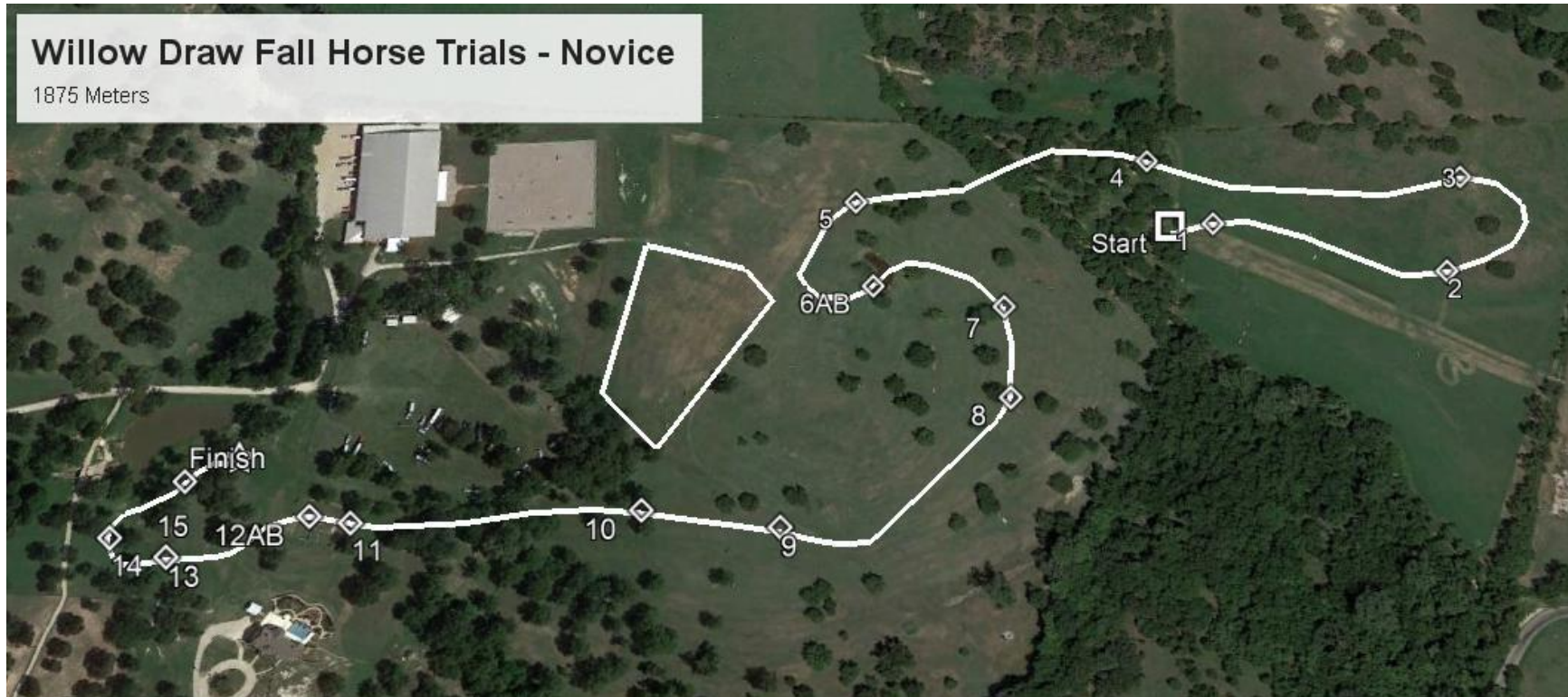
Optimum Time: 5:08

Time Limit: 10: 16

Speed Fault Time: 4:27

Willow Draw Fall Horse Trials - Novice

1875 Meters



1. Bench – 2. Man-Log – 3. Open Front Table – 4. Wiggle Wood – 5. Green Roll – 6A. Tan Roll – 6B. Water
7. Red Corner – 8. Rock Table – 9. Red Table – 10. Trak – 11. Man-Log – 12A. Water – 12B. Man-Log
13. Hilltop Log – 14. Wiggle Wood Rails – 15. Ramp

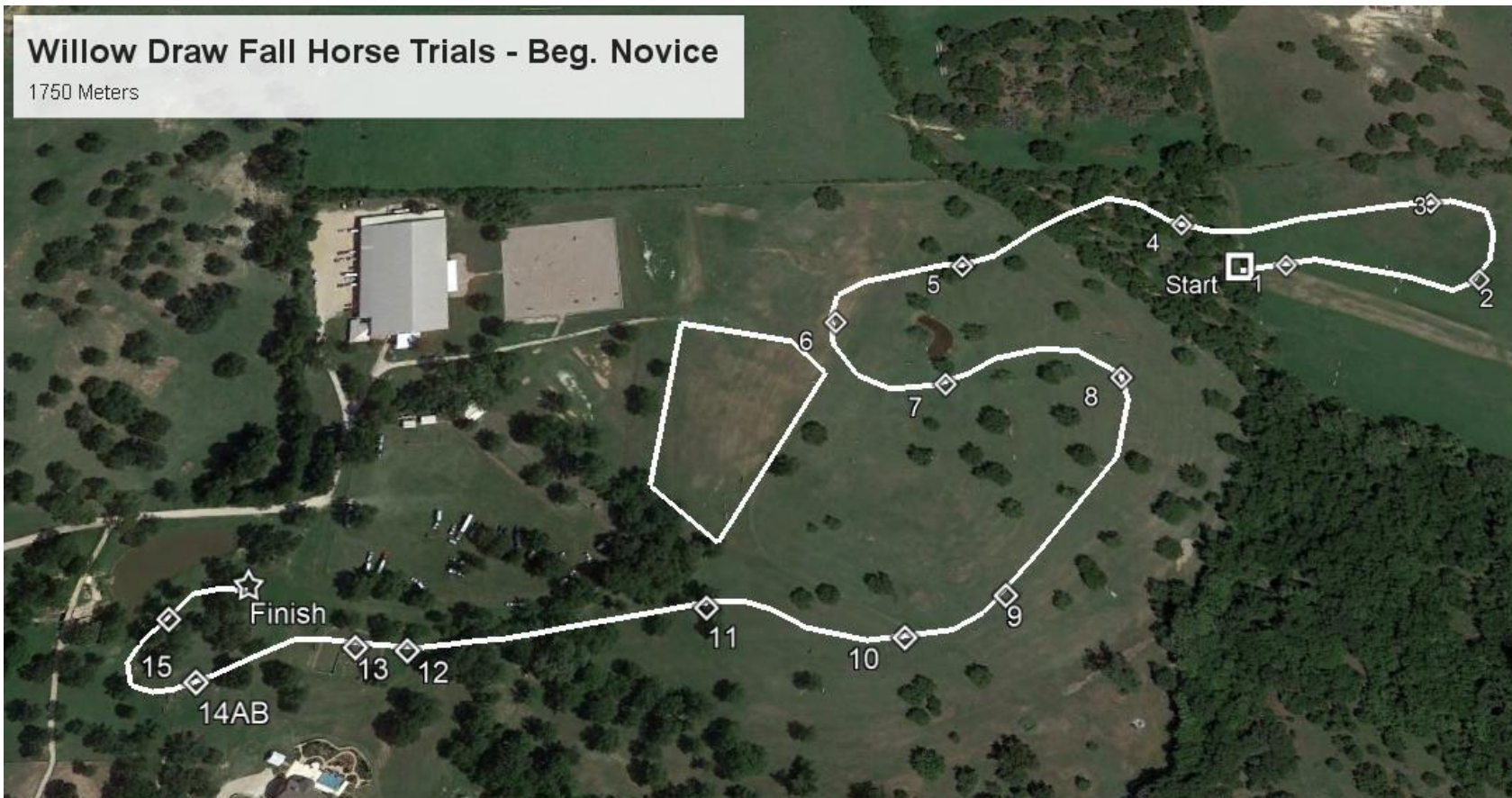
1875 Meters – Speed: 400 M.P.M.

Optimum Time: 4:41 - Time Limit: 9:22

Speed Fault Time: 4:10

Willow Draw Fall Horse Trials - Beg. Novice

1750 Meters



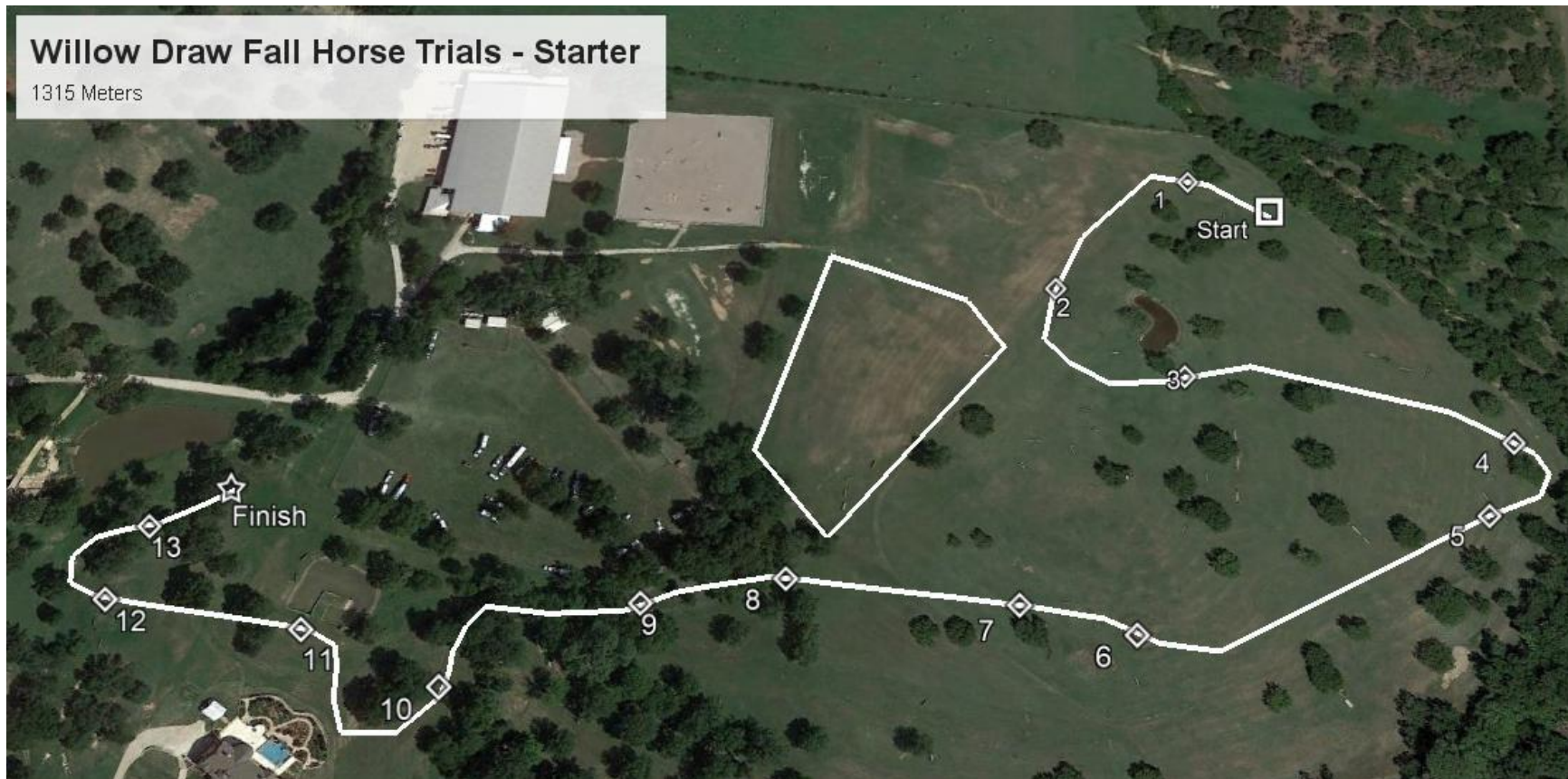
1. Bench – 2. Man-Log – 3. Table – 4. Gate – 5. Farm Rails – 6. Tan Roll – 7. Chevron Ramp – 8. Cabin – 9. Red Table – 10. Man-Log – 11. Trak – 12. Man-Log – 13. Water – 14A. Wiggle Wood Rails
14B. The Slide – 15. Ramp

Distance: 1750 Meters - Speed: 350 M.P.M.

Optimum Time: 5:00 - Time Limit: 10:00 - Speed Fault Time: 4:10

Willow Draw Fall Horse Trials - Starter

1315 Meters



1. Bench – 2. Rolltop – 3. Green Ramp – 4. Coop – 5. Coop – 6. The Mountain – 7. Red Box – 8. Gate –
9. Ramp – 10. Man-Log – 11. Pondside – 12. The Slide – 13. Table

Distance: 1315 Meters - Speed: 325 M.P.M.

Optimum Time: 4:03

Time Limit: 8:06